

SAFETY INSTRUCTIONS

Dear Parent/Guardian:

Before assembling and playing with this product, it is important that you find a safe and stable place to construct this set. Once a suitable place has been found, please read through the following instructions.



Wooden Door



Wardrobe



Glass Patio Door

- Glass and smooth wood are great surfaces for setup.



- A place children can reach with their own height without support.

- Do not assemble the set on unsafe and potentially dangerous and unstable locations such as:

Unreachable places
that require steps



Above sleeping areas



Open Windows

Movable objects



Refrigerators/Freezers

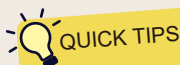
- Not recommended for use on wallpaper, delicate surfaces or painted walls. May damage some surfaces upon removal.

- Be wary of children on the other side of doors.



- To fix the set on a vertical surface, please only use the stickers provided with this set. Others are not recommended.

- Do not put weight over 400 grams on the supports.

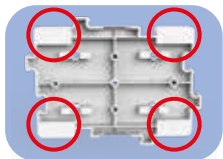


Visit Marblerush.com for more great Marble Rush® content!

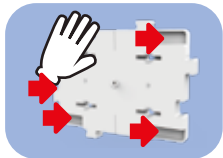
- The set is not designed for permanent use, please change to new stickers if the set falls down.



CAUTION



- Please place 4 stickers on each corner of the Vertical Platform. All stickers must be placed within the circled areas.



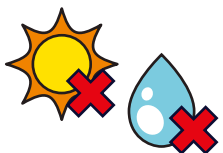
- After fixing the Vertical Platform to the wall, press firmly on each corner.



QUICK TIPS

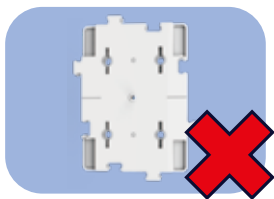
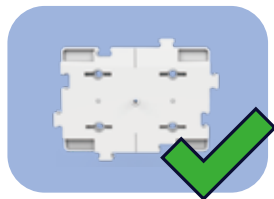
Please do not use stickers from another brand.

- It is recommended to use the stickers between 0-40°C.



- Please store the stickers in a cool location, away from direct sunlight, and out of reach of infants.
- When using stickers, please make sure to avoid dusty, wet and oily areas, as this may affect the performance of the sticker.

- Platform notches must always be horizontal.



TIPS

- The Free Fall Vertical Set comes with two rulers for users to measure the space to find the perfect spot for the set to go. Make sure to use the Spirit Level piece to ensure a level setup for perfect performance.
- To prevent injury from potential falling pieces, please do not construct this set too high. (< 4 ft)

STEP 1



STEP 2



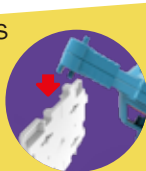
STEP 3



- When removing the Vertical Platform, please note that there are hinges on the top and bottom of the platform.



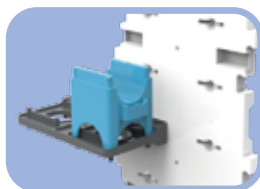
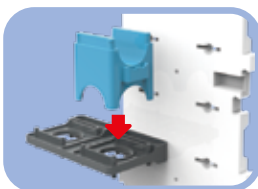
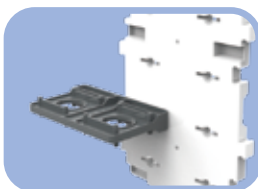
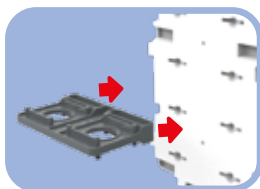
QUICK TIPS



You can use the included removal tool or your finger to pry the platform off the vertical surface.



- When using the Spirit Level piece, please make sure that the pointer is pointing perfectly down for the best performance.
- There are notches on the Vertical Platform, please insert the supports firmly into the notches.
- After securing the supports, please place the blocks and tracks onto the supports. Ensuring that the blocks are attached correctly.



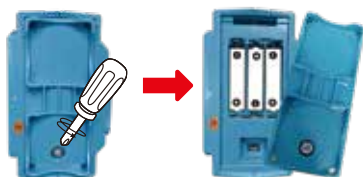
ASSEMBLY

- Follow the steps on the left to assemble the Spiral Lift module.
- Please remove the motor support cover before inserting the rod.

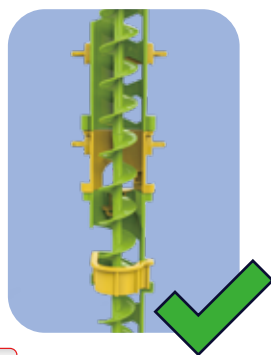


QUICK TIPS

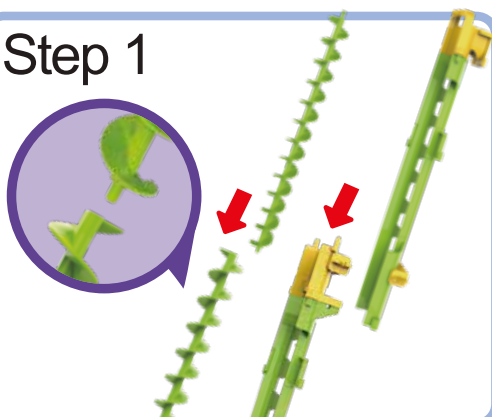
Attach the motor support cover
after inserting the rod.
Please make sure that the cover
is attached correctly.



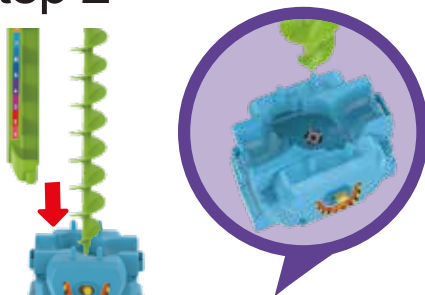
Requires
3 AAA batteries
Batteries not included



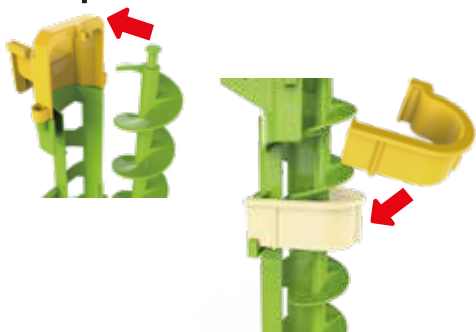
Step 1



Step 2



Step 3



Step 4

